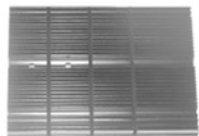
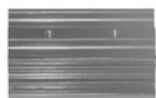


Installation Guide

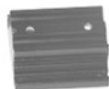
Components



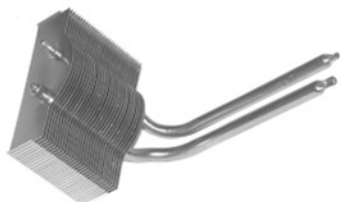
Heatsink (1pc)



Heatsink Base A (1pc)



Heatsink Base B (1pc)



Heatpipe with Stacked Fins (1 set)



Cooling Fan (1 pc)



Nut B (6pcs)



Nut C (6pcs)



Rubber Ring (6pcs)



Frontside VGA RAM heatsink (4 pcs)



Backside VGA RAM heatsink (4 pcs)



Screw A (4pcs)



Screw B (6pcs)



Screw C (8pcs)



L Link (4 pcs)

Hole A

Hole B



Thermal Grease

Installation Instructions:

There are 2 kinds of Heatsink Bases available: The longer one referred to as Heatsink Base A, and the shorter one referred to as Heatsink Base B. Please check the distance of the mounting holes of your VGA card to make sure to use the Heatsink Base suited for your card.

1

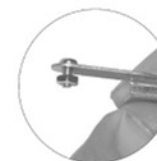
Installation Guide

Installation Guide:

1. Please take a look at the status as in the diagram ⑤, and assemble the L Link step by step



①



②



③



④

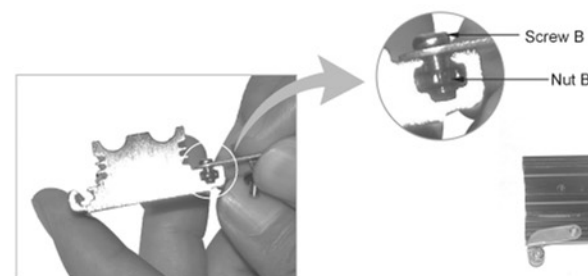
- 1) Insert Screw B into Hole A on the L Link.
- 2) Screw Nut B onto Screw B but do not tighten it completely.
- 3) Insert Screw C into Hole B.
- 4) Slide Rubber Ring onto Screw C till it keeps Screw C & the L Link tightly.
- 5) Confirm the assembled L Link is the same as that as in diagram ⑤.



⑤

2. Please take a look at the status as in the diagram ⑦, and assemble the Heatsink Base step by step

- 1) Insert the Nut B on the assembled L Link into the groove on one side of the Heatsink Base.
- 2) So do the other side by using another assembled L Link.
- 3) Choose one of the 2 Heatsink Bases assembled as in the diagram ⑦ which fits for the VGA card.



⑥



Heatsink Base A Assembly



Heatsink Base B Assembly

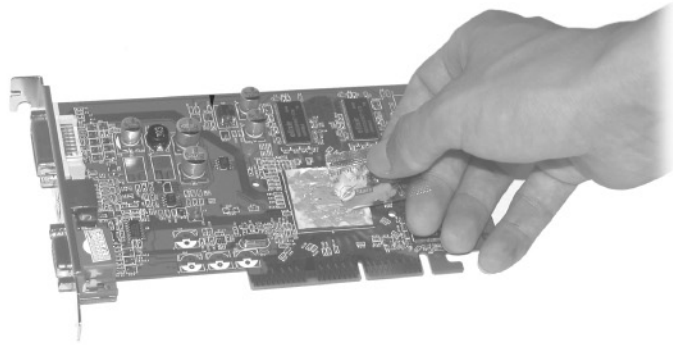
⑦

2

3. Applying the thermal grease

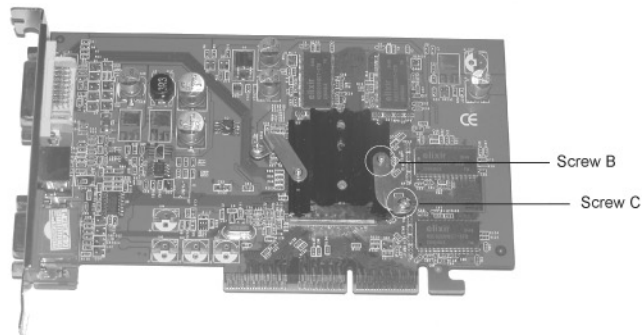
- 1) Clean off the surface of the VGA chipset thoroughly.
- 2) Evenly apply thermal grease onto the VGA chipset by using a card.

Note: On most VGA chipsets the surface is slightly concave. If so, please apply more thermal grease towards the center.

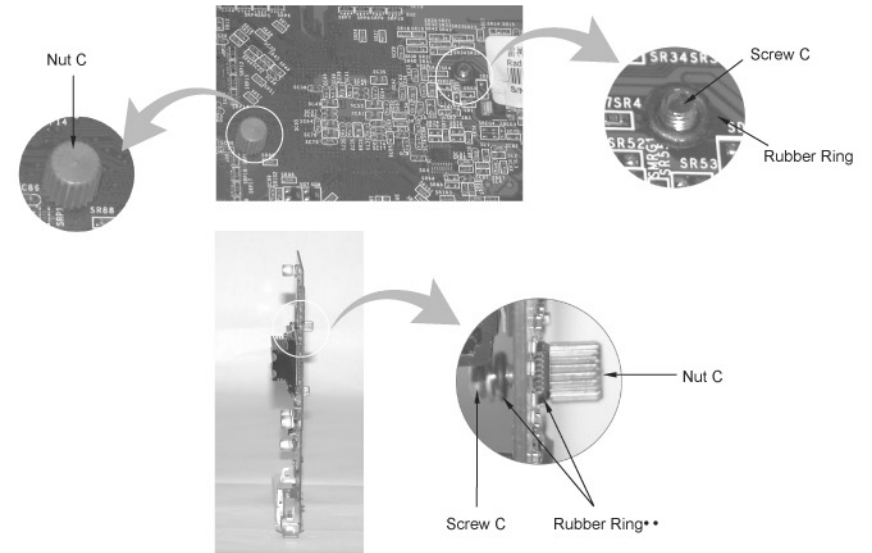


4. Heatsink Base Installation

- 1) Rotate the L Link to insert the Screw C into the mounting holes on the VGA card, then tighten the Screw B completely with a screwdriver.

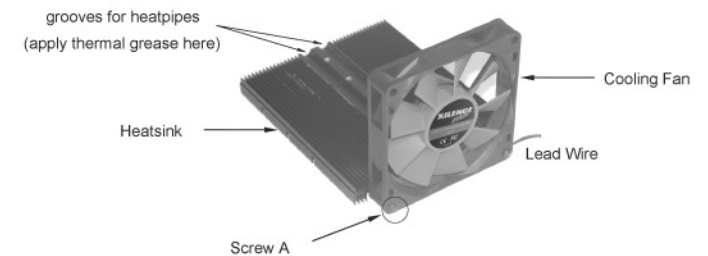


- 2) Turn to the backside of the VGA card, slide 1 pc Rubber Ring onto each Screw C protruding out of the VGA card, then screw the Nut C onto the Screw C.
- 3) From the frontside of the VGA card, tighten the Screw C a full turn at a time one by one till the Heatsink Base contacts the GPU surface tightly.
- 4) Confirm the installation is the same as the diagram below.



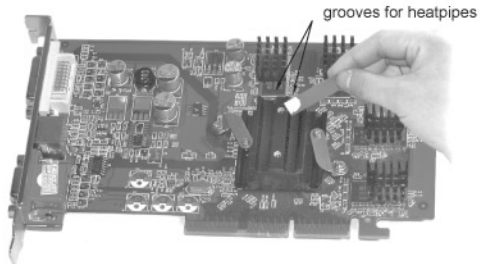
5. Assembling Heatsink and Cooling Fan

- 1) Please take a look at the diagram below first, then mount the Cooling Fan onto the Heatsink by using the Screw A, while keeping the lead wire and the Heatsink on the same side.
- 2) Evenly apply thermal grease onto the grooves for heatpipes on the Heatsink.

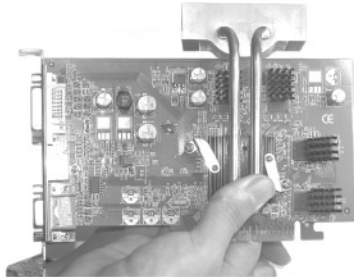


Installation Guide

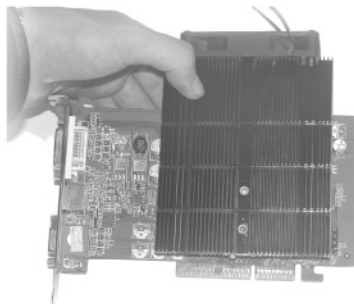
6. Stick the Frontside VGA RAM Heatsink onto the VGA RAM on the frontside of the VGA card.
Then evenly apply thermal grease onto the Heatsink Base including the grooves for heatpipes.



7. Place the heatpipes into the grooves on the Heatsink base. Make sure the Stacked Fins are over the top of the VGA card and towards the backside as in the diagram.

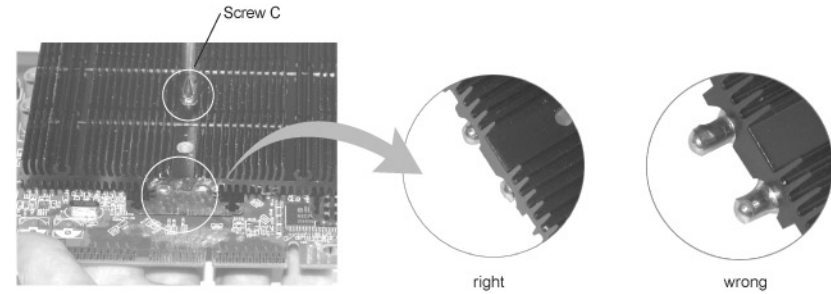


8. Position the grooves for heatpipes on the Heatsink to the heatpipes, which are placed on the Heatsink Base, in last step.

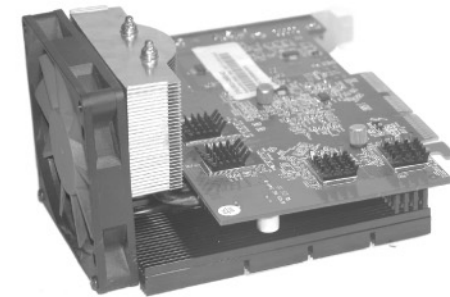


Installation Guide

9. Loosely screw the Heatsink onto the Heatsink Base first by using the Screw C, adjust the heatpipe by hand till its end in line with the edge of the Heatsink as in the diagram, then tighten the Screw C completely.



10. Finish the installation by sticking the Backside VGA RAM Heatsink onto the VGA RAM on the backside of the VGA card.



Attention

- 1) Please read the Installation Guide carefully before installation. We are not responsible for any damage due to improper installation.
- 2) We are not responsible for any damage due to overclocking.